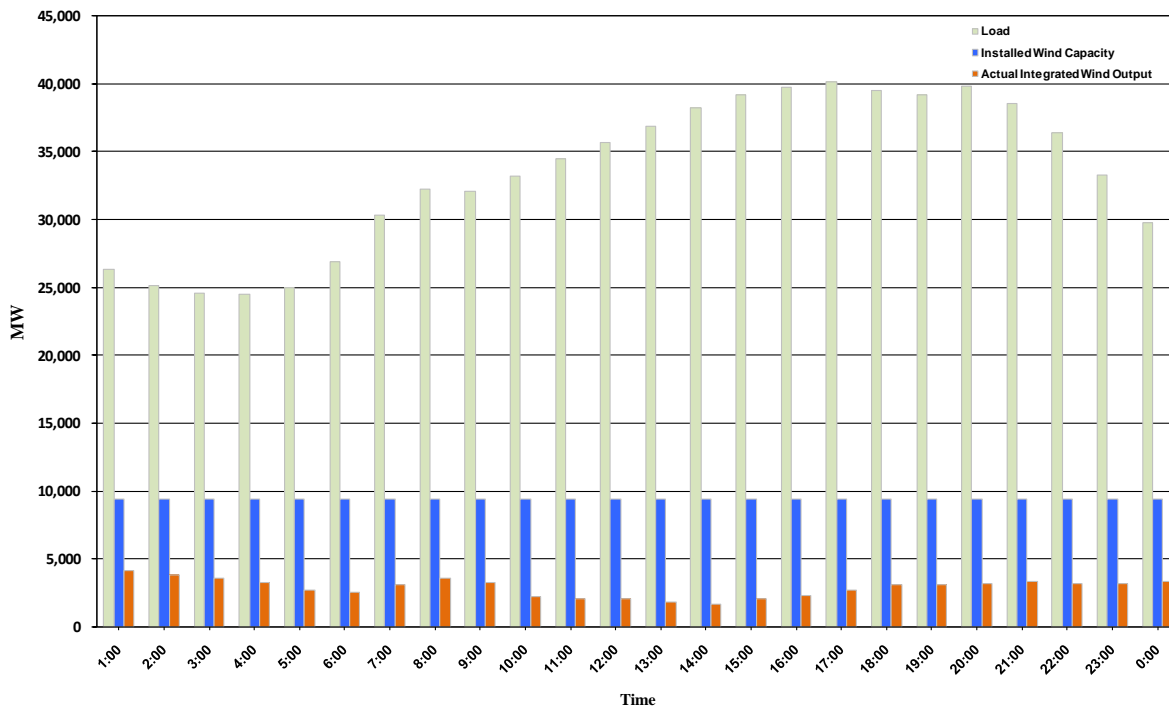




## ERCOT Grid Operations Wind Integration Report: 11/01/10

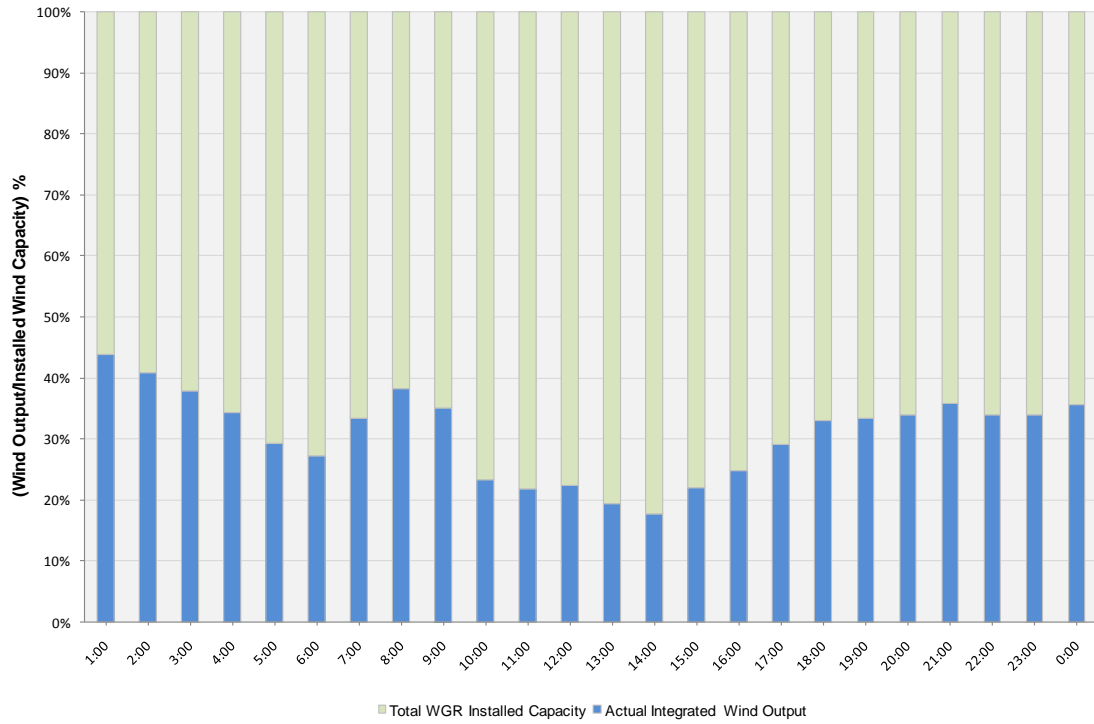
Peak Load	<b>40,114 MW</b>
Load Peak Hour	<b>17</b>
Wind Record 06/12/10	<b>7016 MW</b>
Max Wind value	<b>4245 MW</b>
Wind Peak Hour	<b>00:00:04</b>
Wind Integration %	<b>15.63</b>

Hourly Average Actual Load vs. Actual Wind Output  
11-01-2010

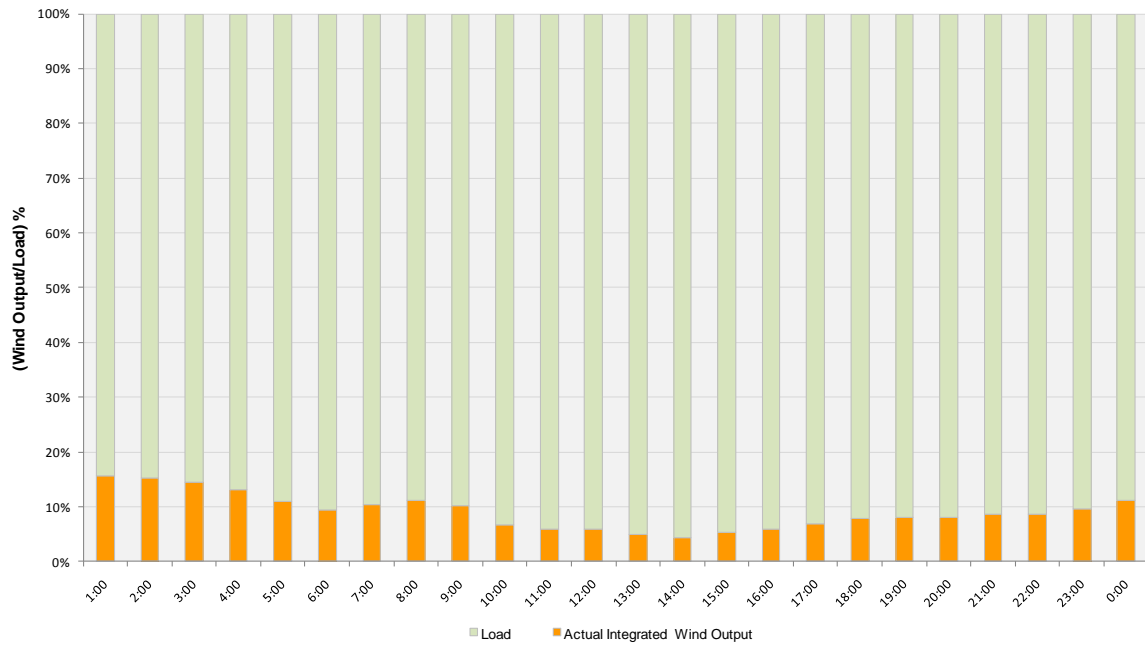




**Actual Wind Output as a Percentage of the Total Installed Wind Capacity**  
**11-01-2010**



**Actual Wind Output as a Percentage of the ERCOT Load**  
**11-01-2010**





ERCOT Load vs. Actual Wind Output 10/25/10 - 11/01/10

